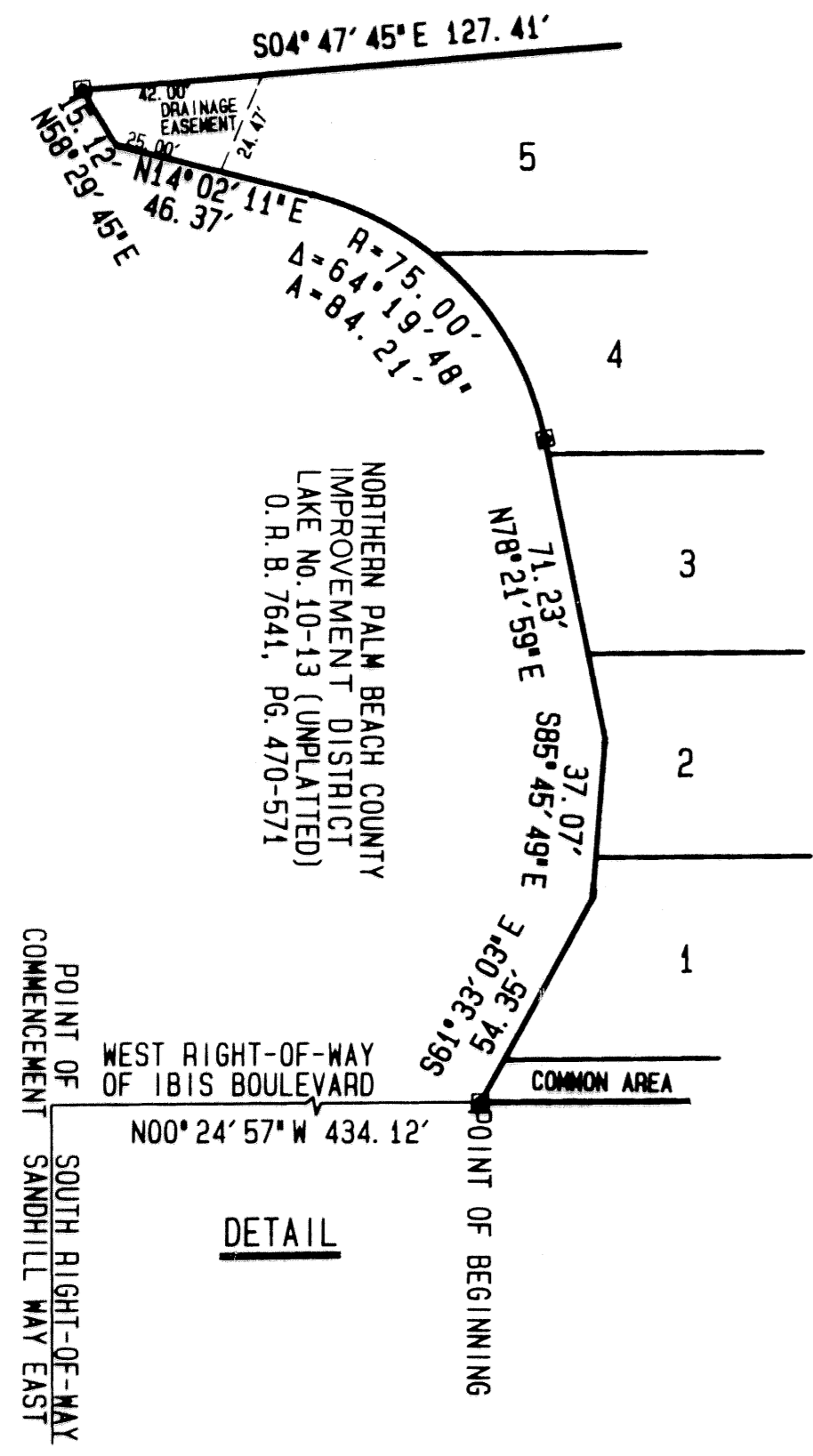
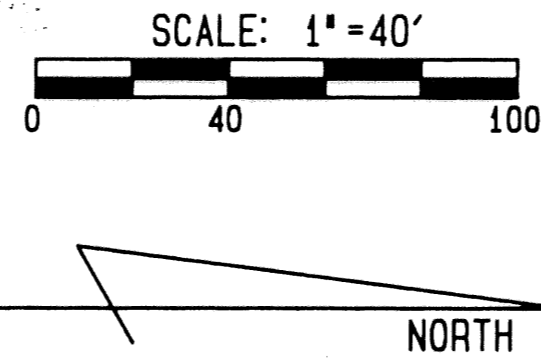
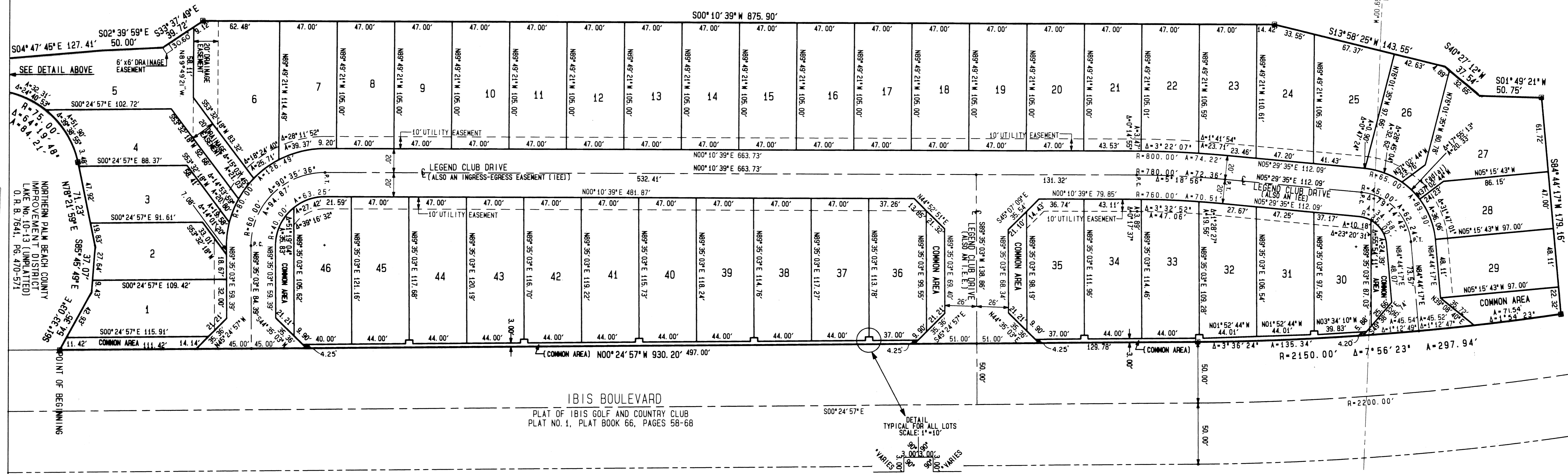


# A PLAT OF IBIS GOLF AND COUNTRY CLUB PLAT No. 11

A PLANNED UNIT DEVELOPMENT  
LYING IN SECTION 24, TOWNSHIP 42 SOUTH,  
RANGE 41 EAST, CITY OF WEST PALM BEACH,  
PALM BEACH COUNTY, FLORIDA  
BEING A REPLAT OF A PORTION OF TRACT A,  
IBIS GOLF AND COUNTRY CLUB PLAT No. 14, PLAT BOOK 75, PAGES 107-117  
JUNE 1995 SHEET 2 OF 2



REMAINDER OF TRACT A,  
IBIS GOLF AND COUNTRY CLUB PLAT No. 14,  
PLAT BOOK 75, PAGES 107-117



SUBDIVISION Ibis Golf and Country Club  
BOOK 75 Plat No. 11  
FLOOD ZONE FLOOD MAP PAGE 158  
QUAD SE  
PUD NAME West Palm Beach  
ZIP CODE 33411

**TIMOTHY J. MESSLER, INC.**  
CONSULTING ENGINEERS AND LAND SURVEYORS  
3950 RCA BOULEVARD, SUITE 5005, PALM BEACH GARDENS, FLORIDA 33410  
TELEPHONE (407) 627-2226 TELEFAX 624-1569

IBIS GOLF AND COUNTRY CLUB PLAT No. 11

PROJECT NO.: 95038P  
DATE: MAY 1995  
SHEET 2 OF 2

THIS INSTRUMENT PREPARED BY:  
MARK D. BROOKS  
PROFESSIONAL LAND SURVEYOR  
STATE OF FLORIDA No. 3426  
FOR: TIMOTHY J. MESSLER, INC.  
3950 RCA BOULEVARD  
SUITE 5005  
PALM BEACH GARDENS, FL.

NOTICE:  
THERE MAY BE ADDITIONAL RESTRICTIONS  
THAT ARE NOT RECORDED ON THIS PLAT THAT  
MAY BE FOUND IN THE PUBLIC RECORDS OF  
THIS COUNTY.